



fluidlab R-300

Troubleshooting –Connecting your fluidlab R-300 via Hotspot

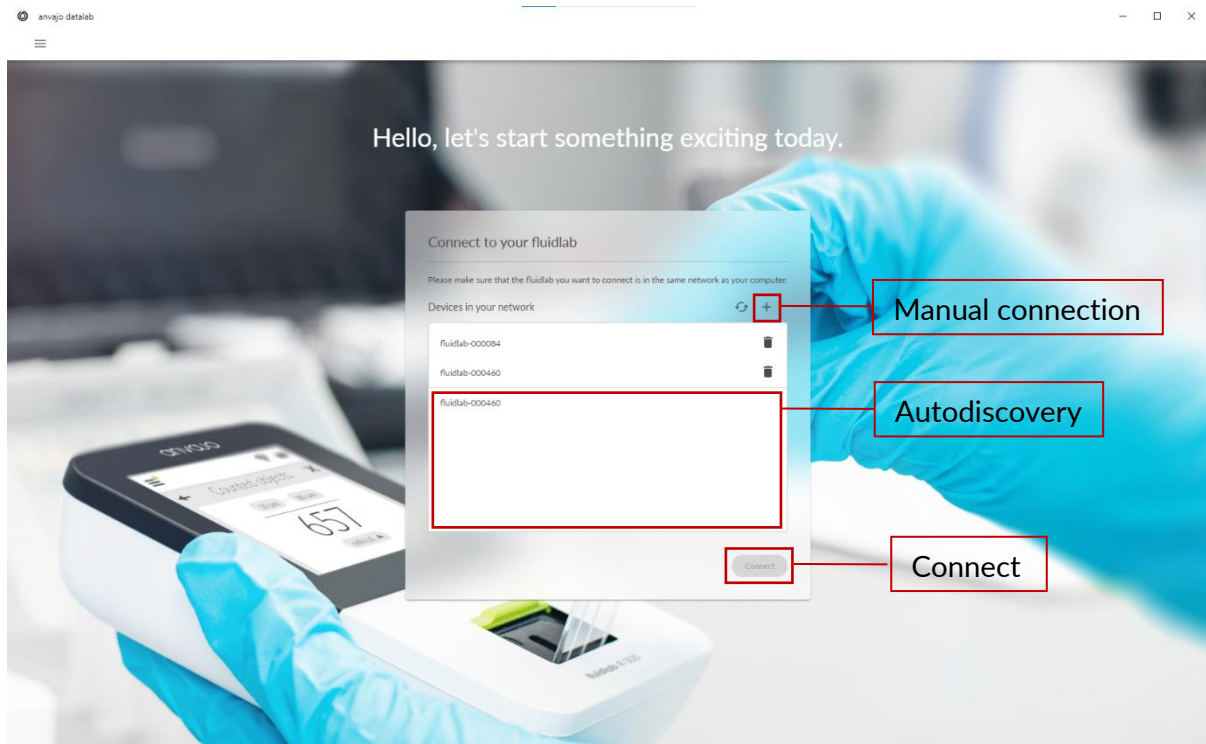
To enable data transfer between your fluidlab R-300 and a computer, the fluidlab must be connected to the datalab. The anvajo datalab is a software, which you need to install on the corresponding computer and which you can download for free from our homepage anvajo.com.

For the connection the fluidlab provides two options in the settings:

- 1.) Connection of the fluidlab via WLAN
- 2.) Connection of the fluidlab via hotspot

How to connect your fluidlab R-300 via Hotspot with the datalab

1. Go to the fluidlab settings and switch on the hotspot.
2. The fluidlab should now be shown in your network list of the computer. Select your 'fluidlab-000XXX' in the list.
Note: You can find the name of your fluidlab under 'Settings > System > Hostname'.
3. When your computer asks for the password, click on 'connection instead by using a network key' and type in 'fluidlab' as network key.
4. Open your datalab software.
5. You can now use the 'Autodiscovery' or the 'Manual Connection' to connect your fluidlab with the datalab.



Autodiscovery

Your fluidlab is automatically listed here if it is either on the same network as the computer or connected via fluidlab hotspot. Choose your fluidlab in the list and click on 'Connect'.

Manual connection

Additionally, you have the possibility to add your fluidlab manually by clicking on the '+', entering the name of the fluidlab (e.g., fluidlab-000460) and clicking 'Connect'.

Note: You can find the name of your fluidlab under 'Settings > Hotspot > SSID'.

The fluidlab should be successfully connected to the datalab afterwards and you can access the fluidlab's stored data for further processing or export.

What to do if your fluidlab does not appear in the Autodiscovery

1. Make sure that you have correctly connected the fluidlab to your computer as described above.
2. Try adding your fluidlab manually as described under 'Manual connection'.
3. If the manual connection using the name of the fluidlab is not possible, there is another option for connection. You can also use the manual connection by clicking on the '+' and entering the IP (e.g., 192.168.200.1) of the fluidlab hotspot under 'Device *' and clicking on 'Connect'.

Note: You can find the IP in the fluidlab settings under 'Settings > Hotspot > IP'.

4. Switch the device off and on again once and reconnect to your computer as described above.
5. If the problem persists, send us an e-mail to support@anvajo.com with the following content:
 - **Serial number (SN)** of the device: 10038 000XXX located on the back of the device
 - **Description of the problem** and which steps led to this problem