



Release Notes - datalab

SW-Version v24.1.6

By November 1st, 2024 anvajo will release the latest version of the desktop application software, called “datalab”. This software version will include the listed below changes.

Changes related to the fluidlab R-300 only

Create PDF Report

All results from your fluidlab R-300 can be exported as a PDF now. Simply make a tick at the respective field before exporting:

Export - Viability (1 selected)

Export directory: **Select**

Data Export viability data as Microsoft Excel® file(s)
 Export each measurement separately
 Merge all measurements into a single file
viability-data .xlsx

Microscope image Export microscope image with boxes
 Export microscope image without boxes
 Export hologram (if available)

Cell size distribution Export cell size distribution as image

Report Export an analysis overview as a PDF file
 Export each measurement separately
 Merge all measurements into a single file
viability-report .xlsx

Custom logo **Change**

Cancel **Export**

Raw Count and Average Size

We have added two new bits of information to the meta info for Cell Counts and Viability measurements:

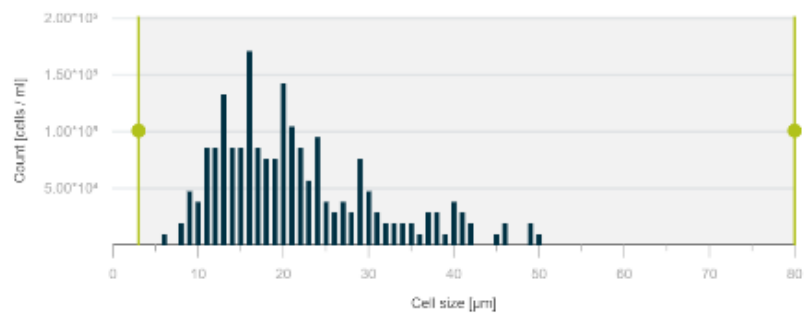
- Raw box count – How many objects were actually detected by the algorithm inside the Field-of-View.
- Average object size – The average sizes in micrometer of the counted objects.

The data is available in the preview as well as the excel exports

g]bd

OVERFULL

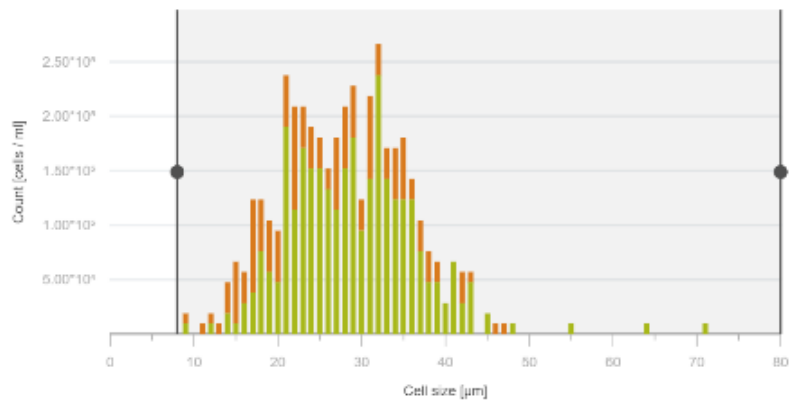
Assay: **Cell Count**
 Units: **ml** | **µl**
 Object size: **3 µm - 80 µm**
 Dilution: **1 : 1**
 Counted cells: **217**
 Average cell size: **21.50 µm**
 Sample carrier: **Acella20**
 Date: **2024-01-16 16:07:55**



ghbvxdvj

OVERFULL

Assay: **Viability**
 Units: **ml** | **µl**
 Living: **3.04*10^8 cells / ml**
 Dead: **1.24*10^8 cells / ml**
 Total: **4.28*10^8 cells / ml**
 Object size: **8 µm - 80 µm**
 Dilution: **1 : 1**
 Counted cells: **320 living - 130 dead**
 Average cell size: **28.10 µm**
 Sample carrier: **Acella20**
 Date: **2024-01-16 16:09:39**



General Changes

Add Company Logo to PDF Report

It is now possible for our customers to add a company logo to the PDF report. For doing this, simply choose the picture you would like to add before you hit the export button.

NOTE:

- Supported file formats: png, jpg, svg
- The logo will be placed in the top right corner
- The logo will be automatically sized to a reasonable size
- The logo will only be added to PDF exports (not excel files)

Export - Viability (1 selected)

Export directory: Select

Data

- Export viability data as Microsoft Excel® file(s)
 - Export each measurement separately
 - Merge all measurements into a single file

viability-data .xlsx

Microscope image

- Export microscope image with boxes
- Export microscope image without boxes
- Export hologram (if available)

Cell size distribution

- Export cell size distribution as image

Report

- Export an analysis overview as a PDF file
 - Export each measurement separately
 - Merge all measurements into a single file

viability-report .xlsx

Custom logo Change

Cancel Export

Data Sync

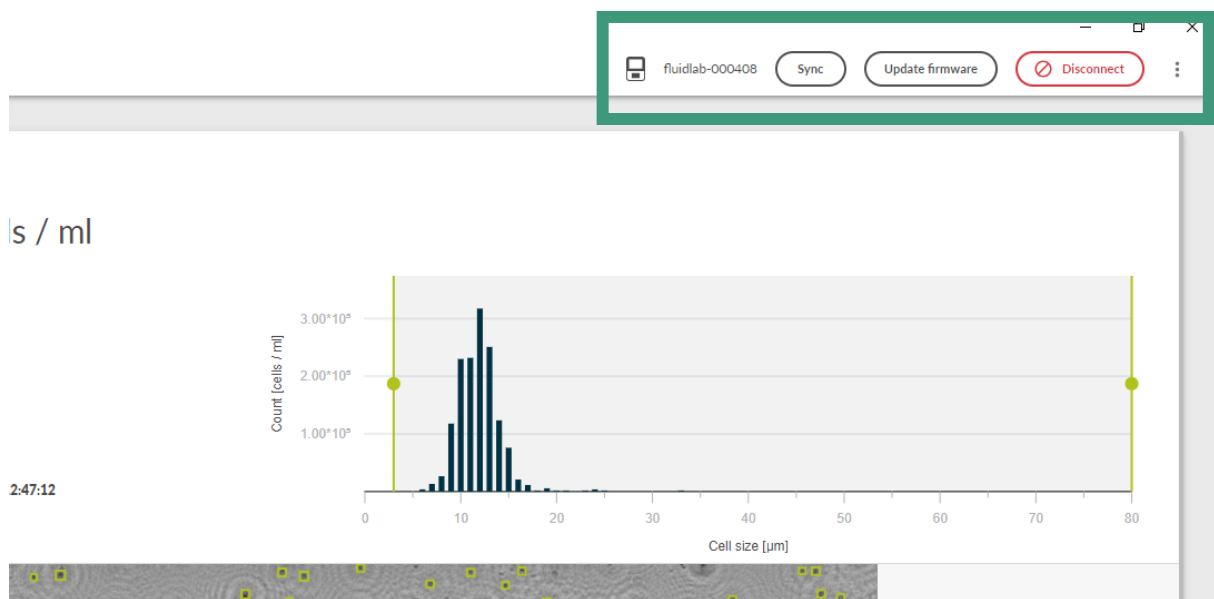
Data Sync allows the user to synchronize the data from a connected fluidlab to a PC and to review the data offline.

Initial sync

- Connect to a fluidlab regularly just as before
- In the top of the window you will find a new “Sync” button. Clicking it initializes the syncing. The button will be replaced by a “Syncing...” text.
- Once the syncing is done you can find a new icon next to each synced measurement
- Disconnect from the device

NOTE: Regular usage should not be impacted while syncing data – you can use everything as before.

NOTE: You can sync multiple devices to your PC.



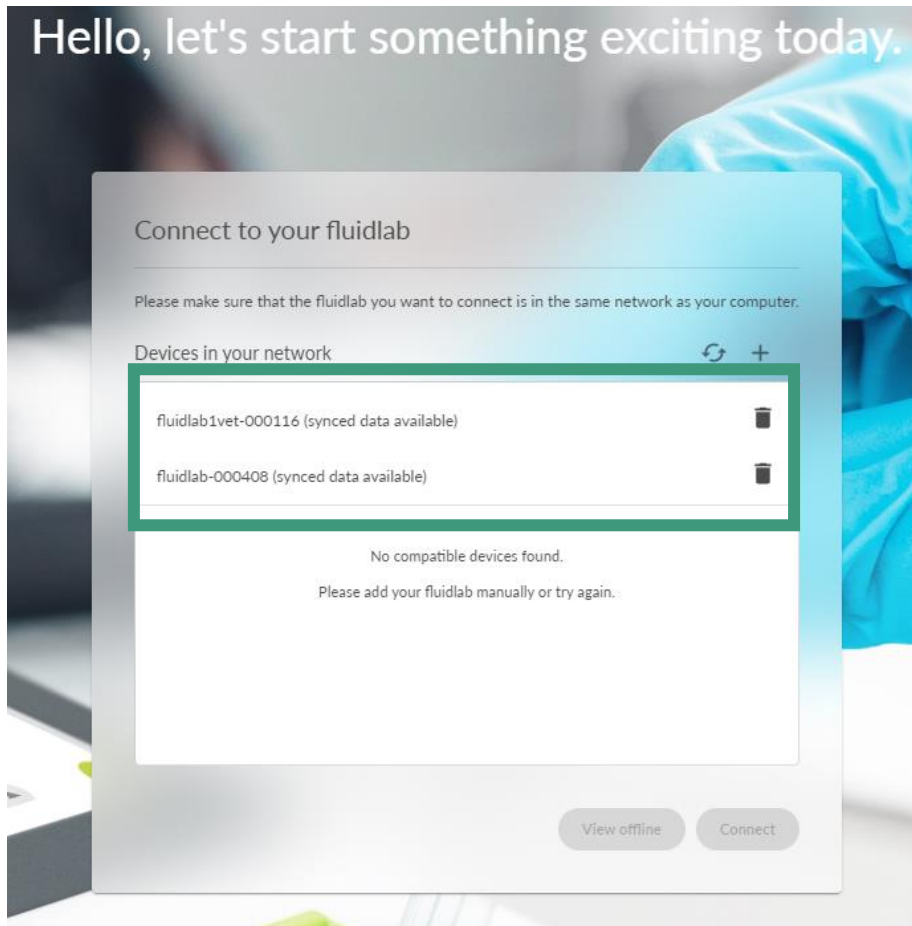
Connecting offline

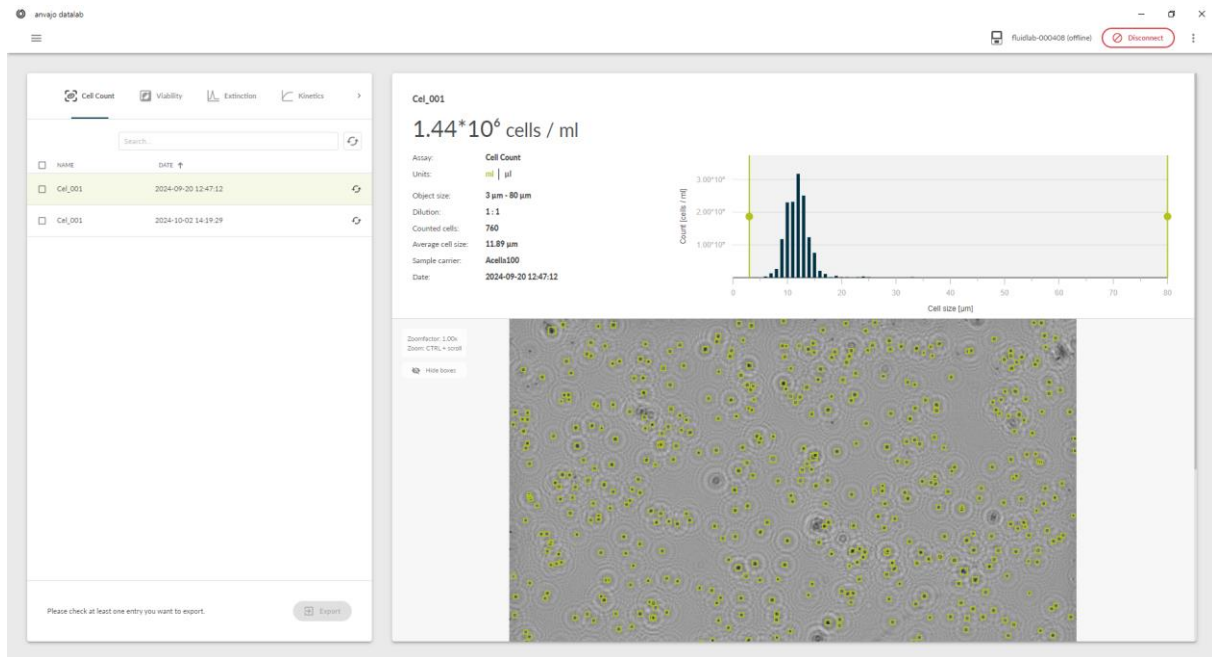
- If the device has synced data, you will see a hint next to the device name in the connect view at the start of the program.
- Select the device.
- You will see two buttons at the bottom
 - “View offline” directly loads the local data without a connection to the device
 - “Connect” will first try to connect regularly to the device. If the device can’t be found in the network, the local data will be loaded

NOTE: The main view will be slightly different when you are looking at local data without an active connection to the device.

NOTE: If you connected to your device in the sync/offline-mode

- You will not be able to trigger updates on the device
- The device name will be suffixed with “(offline)”
- The sync button is hidden





Connecting to a device with synced data available

- If you are connecting to a device that was previously synced a resync will happen automatically after connection
 - Data that was deleted on the device will be deleted from your local data
 - New data will be synced to your PC
 - Existing data will be skipped

Clearing synced data

- To clear existing synced data, open the context menu at the top right of the screen
- Click on "Clear synced data"